



TeamBoard Total Mobile

Product Code
TMSMTM110
TMSMTM220

www.teamboard.com

Also available:
TeamBoard Mobile Stand
TeamBoard T4 Interactive Whiteboard
TeamBoard UST Projector 0.19

TeamBoard Total Mobile

New model designed for TeamBoard UST 0.19 Projector.

TeamBoard goes mobile

TeamBoard Total Mobile™ brings the interactivity of TeamBoard to almost any environment. TeamBoard Total Mobile, the world's best-designed mobile interactive whiteboard stand, allows you to integrate your TeamBoard and projector into one mobile, adjustable unit. Turn any space into an interactive learning and presentation space quickly. Best of all, no tools or technical expertise are required to adjust the height or the location—just press a button to drop the height, and roll through any standard-size doorway. Easy does it!

Improved Accessibility

TeamBoard Mobile stand offers the presenter a full 26" of height adjustment through just the touch of a finger. With finger touch operation and low noise level, the presenter can adjust the height without disrupting the flow of the interactive presentation. The height range improves accessibility of TeamBoard for users of all stature, and it is ADA compliant too.

Position TeamBoard anywhere in the room

Adjust the viewing angle a full 360° by simply pivoting the unit—the board, projector and laptop move with it, and stay calibrated!

Share TeamBoard across classrooms easily

Moving TeamBoard Total Mobile closer or further from an audience is a snap, with its large casters that permit easy rolling. The casters are also 'total lock' to prevent unwanted rolling and pivoting. Drop to the lowest setting and roll through a standard size doorway, your TeamBoard is now easy to relocate—ideal for shared-technology environments.



Large diameter for easy roll and pivot, as well as total-lock for high stability.



Adjustable laptop shelf with integrated cable management

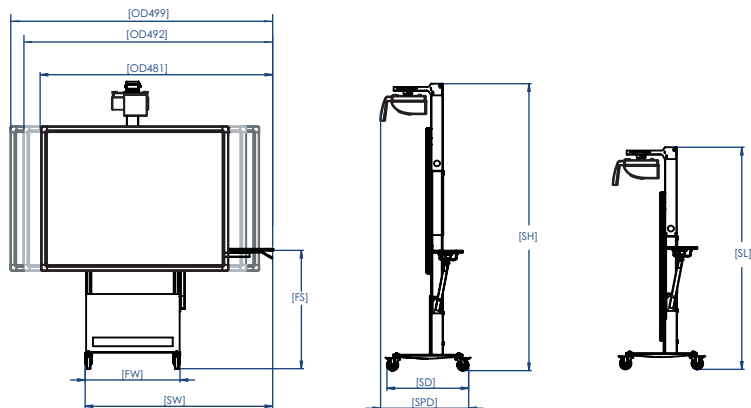


Features	Benefits
TeamBoard Total Mobile	<ul style="list-style-type: none"> ✓ Height Adjustable <ul style="list-style-type: none"> > 26½" (66cm) of vertical travel to accommodate presenters of all heights > At lower heights TeamBoard Total Mobile is accessible for those in early grades or wheelchairs, allowing full use of the board – particularly important when using software with top-positioned menus.
	<ul style="list-style-type: none"> ✓ Substantial Lockable Casters <ul style="list-style-type: none"> > Easy movement from room to room with minimal rolling resistance > Change locations or heights easily without technical assistance > Casters are 'total lock' – for both rolling and swivel lockout stability
	<ul style="list-style-type: none"> ✓ Push-button Controls <ul style="list-style-type: none"> > Finger touch electronic height adjustment > It's infinitely adjustable – choose any height within the range without compromise
	<ul style="list-style-type: none"> ✓ Quiet Operation <ul style="list-style-type: none"> > Low and uniform noise level means zero interruption height adjustment > Easy to maintain normal speaking voice while adjusting height
	<ul style="list-style-type: none"> ✓ Adjusts Quickly <ul style="list-style-type: none"> > Height adjustment speed of 1.7"/sec (43mm/sec) – can be raised to full height from minimum in only 45 seconds
	<ul style="list-style-type: none"> ✓ Topout Trip Switch <ul style="list-style-type: none"> > TeamBoard Total Mobile has a trip switch – if you have a low clearance ceiling, and extend the tower too high, the trip switch will cut the lift power until reset.
	<ul style="list-style-type: none"> ✓ Maximum Height <ul style="list-style-type: none"> > At its uppermost position, with the projector installed, overall height is 101 ½" (2.57m)
	<ul style="list-style-type: none"> ✓ Minimum Height <ul style="list-style-type: none"> > In its lowest position, with projector installed, overall clearance of 75" (1.9m) is all that's required > Fits through standard doorway when projector is in lowest position
	<ul style="list-style-type: none"> ✓ New Arm Design <ul style="list-style-type: none"> > New adjustable horizontal arm for increased durability and cable management
	<ul style="list-style-type: none"> ✓ T4, UST Projector Compatible <ul style="list-style-type: none"> > Works with T4 and TeamBoard UST Projector 0.19

Design Intent

The TeamBoard Total Mobile lets the presenter make any space an interactive collaboration space. Simply unplug a single power cord and roll away. No technician required, because Total Mobile maintains calibration even while being rolled from room to room. Rugged construction with finger touch height adjustability. New TeamBoard Total Mobile has been redesigned to work with TeamBoard UST Projector 0.19.

Operating Specifications	
Functionalities	Mobility – can easily be rolled room to room Finger touch height adjustability Projector integration Stable, robust construction
Projector Compatibility	TeamBoard UST Projector 0.19
Power Requirements	110V or 220-240V – please specify for your country
Temperature Range	41° F to 104°F (+5°C to +40°C)
Warranty	See Standard Global Warranty on TeamBoard.com



Dimensions		TMSMTM110/TMSMTM220	
Overall width	Stand foot (FW)	33"	0.8m
	Stand with laptop shelf (SW)		
	Retracted	63"	1.6m
	Extended	71 ¾"	1.8m
Overall height	Max (SH)	101 ½"	2.6m
	Min (SL)	75"	1.9m
	Floor to laptop shelf (FS)	41"	1.0m
Overall depth	Without projector (SD)	28"	0.7m
	With projector (SPD)*	30"	0.8m
Net Weight	Stand only	110 lbs	50kg

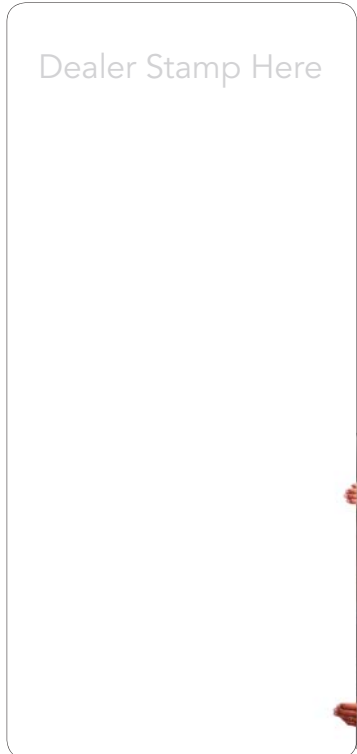
* TeamBoard UST Projector 0.19

What's in the box...

- Your new TeamBoard Total Mobile (partially knocked down, dealer assembled)
- Allen key hex tool
- Instruction sheet
- Stability brackets
- Laptop arm and tray
- Mounting hardware
- One 9/16" open-end wrench (required for initial assembly only) not included

Shipping Details

Shipping Carton	Width	48"	1.22m
	Height	36"	0.91m
	Depth	9"	0.22m
	Volume	9 ft ³	0.25m ³
Pallet Quantity	1 unit		
Shipping Weight	Gross Weight	124lbs	56.2kg
	Documentation	Harmonization Code	8473 30 5100
	Country of Origin	Canada	



Designed and manufactured in North America by Egan TeamBoard Inc., leaders in interactive whiteboard solutions since 1994. TeamBoard is part of the Egan Visual family, designers and manufacturers of visual communication products for over 40 years. You can count on TeamBoard products to be well-designed and well-built for years of hassle-free enjoyment. **Environmentally responsible design, quality, value and timeliness.** The management systems of Egan TeamBoard Inc. have been certified and have established, documented, implemented and continuously maintains a Quality Management System and Environmental Management System, as a registrant of the ISO 9001:2008 and ISO 14001:2004 standards.

Learn or Buy
teamboard.com
sales@teamboard.com
+1-905-851-2826

Connect & Share
twitter.com/teamboard
youtube.com/eganteamboard

Support
support@teamboard.com

