

The Quick Start Guide addresses some TeamBoard basics - from installation steps to screen calibration. This document assumes a basic understanding of your computer hardware and software. If you require more detailed information refer to TeamBoard.com or contact Technical Support.

Table of Contents

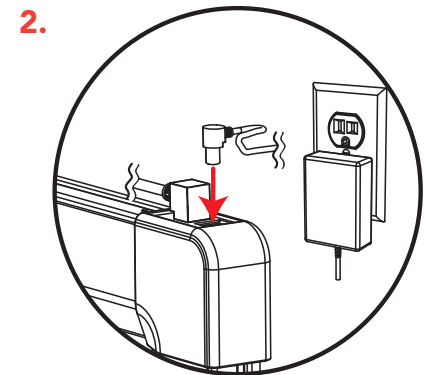
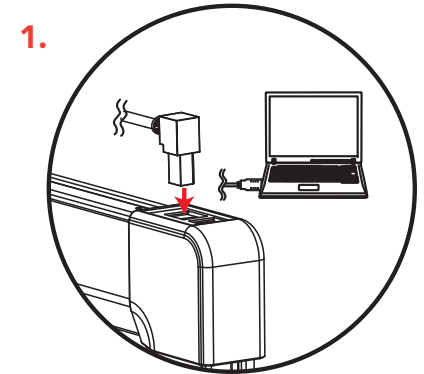
Hardware	pg 1
Setup Notes for Windows 7	pg 2
Installing MultiTouch Driver for Mac OS X	pg 3
Calibration for Windows	pg 4
Calibration for Mac OS X	pg 5

Hardware

Installation

See TeamBoard T4 Installation Instructions shipped with your TeamBoard or download the instructions from TeamBoard.com.

Connecting



1. Plug the square end of the USB cable into the USB port on your TeamBoard. Plug the other end of the USB cable into an available USB port on your computer.
2. Plug the power adapter into the power plug on the TeamBoard. Plug the supplied power adapter into a wall socket. Your computer should immediately detect the TeamBoard T4.

**Register your TeamBoard T4
online at TeamBoard.com**

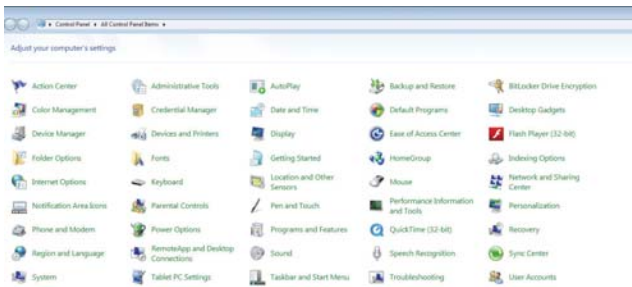
Setup Notes for Windows 7

To enjoy full interactive touchscreen experience, please make sure that "Flicks" are disabled in Windows 7 operating system.

1. Open the Start menu and select Control Panel.

2. Ensure Icons are showing.

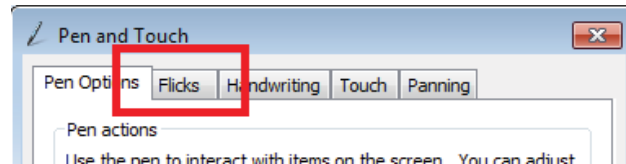
To show Icons, A) Select Category, next to "View By." B) Click large or small icons.



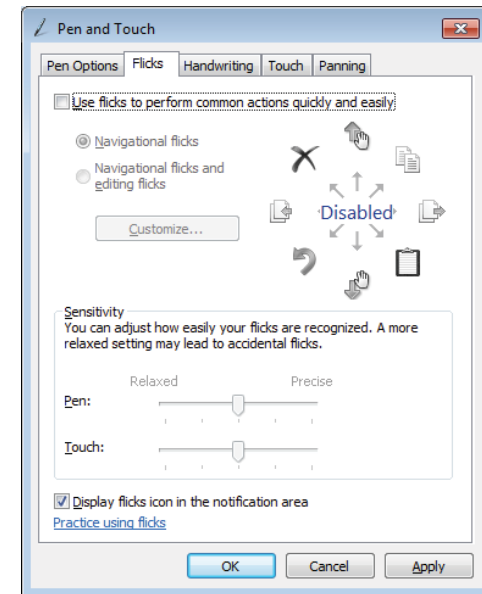
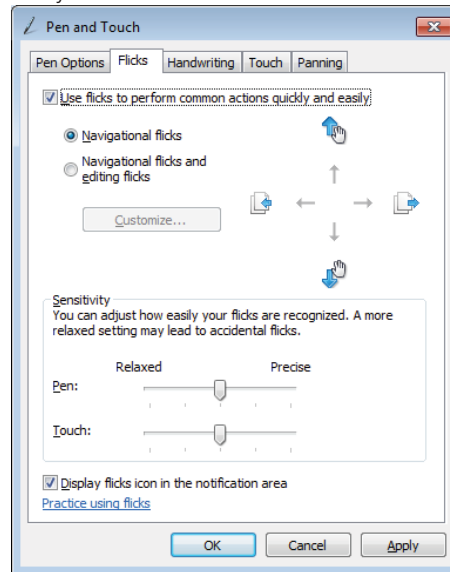
3. Open "Pen and Touch".



4. Select "Flicks" tab.



5. Uncheck "Use flicks to perform common actions quickly and easily".



6. Click "OK" and close Control Panel.



Installing MultiTouch Driver For Mac OS X

When connected to a Mac OS X computer without a driver, TeamBoard T4 is a single-touch interactive whiteboard. To enable MultiTouch functionality, please follow the instructions below.

1. Download TeamBoard MultiTouch Driver from TeamBoard.com.
2. Open TeamBoard MultiTouch Driver.dmg.
3. Open and run TeamBoard MultiTouch Driver.pkg. Click "Continue".



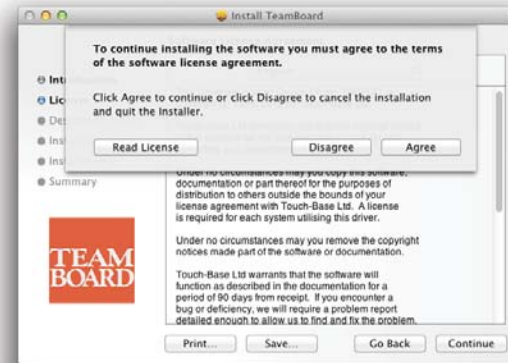
4. On the "Welcome" window select "Continue".



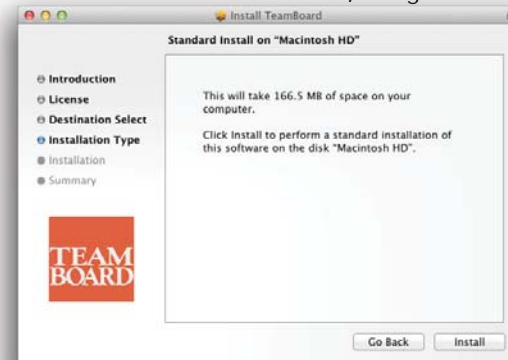
5. Read and accept license agreement. Click "Continue".



6. On the "Agreement" window, select "Agree".



7. On the "Standard Install" window, change the install location (if needed), then click "Install".



8. Enter your credentials and click "Install Software". Once installation completes, click "Close".





Calibration for Windows

Filled TeamBoard

If your projected image completely fills the TeamBoard without overlapping the frame you will not need to calibrate the TeamBoard.

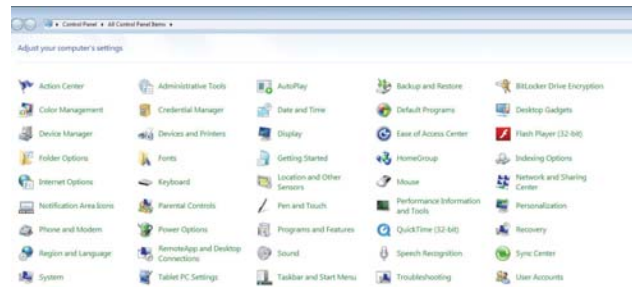
To provide calibration samples, tap the crosshair each time that it appears on the screen.

Right-click anywhere on the screen to return to the last calibration point. Press the "Esc" button to close the tool. Do not change your screen orientation until you have completed the calibration process.

Partially or Overfilled TeamBoard

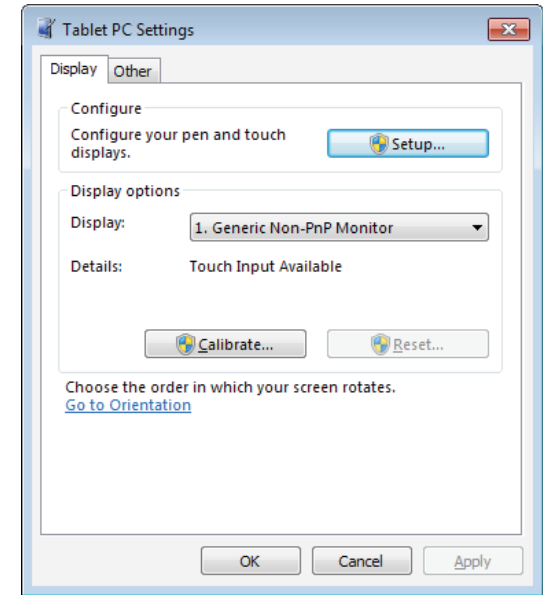
If your projected image does not completely fill the TeamBoard or it overfills the TeamBoard and overlaps the frame, please adjust your projector first. If this is not practical, please follow the instructions below.

1. Open the Start menu and select Control Panel.
2. Ensure Icons are showing.
To show Icons, A) Select Category, next to "View By." B) Click large or small icons.



3. Open "Tablet PC Settings".
- Power Options
 - RemoteApp and Desktop Connections
 - Tablet PC Settings**
 - Windows CardSpace

4. If this is your first TeamBoard, skip to step 5. Otherwise, click "Reset".
5. Click "Calibrate."



6. Touch all the calibration points as prompted.
7. Click "OK" and close Control Panel.

Your TeamBoard is now calibrated.



Calibration for Mac OS X

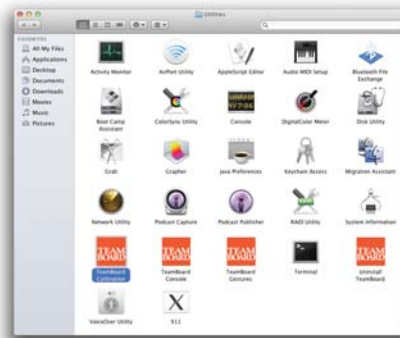
Filled TeamBoard

If your projected image completely fills the TeamBoard without overlapping the frame you will not need to calibrate the TeamBoard.

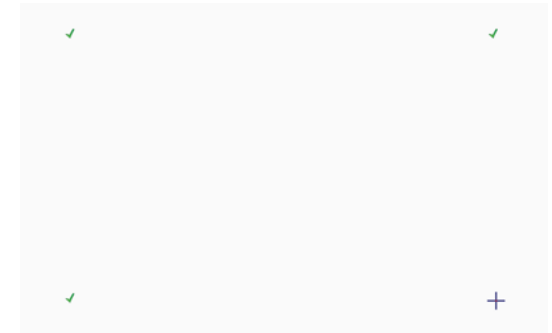
Partially or Overfilled TeamBoard

If your projected image does not completely fill the TeamBoard or it overfills the TeamBoard and overlaps the frame, please adjust your projector first. If this is not practical, please follow the instructions below.

1. Open "TeamBoard Calibration" in the Utilities folder.



2. Touch the center of each cross (4 total) as they appear. A green checkmark will appear as you calibrate.



Your TeamBoard is now calibrated.

FAQ

See TeamBoard.com